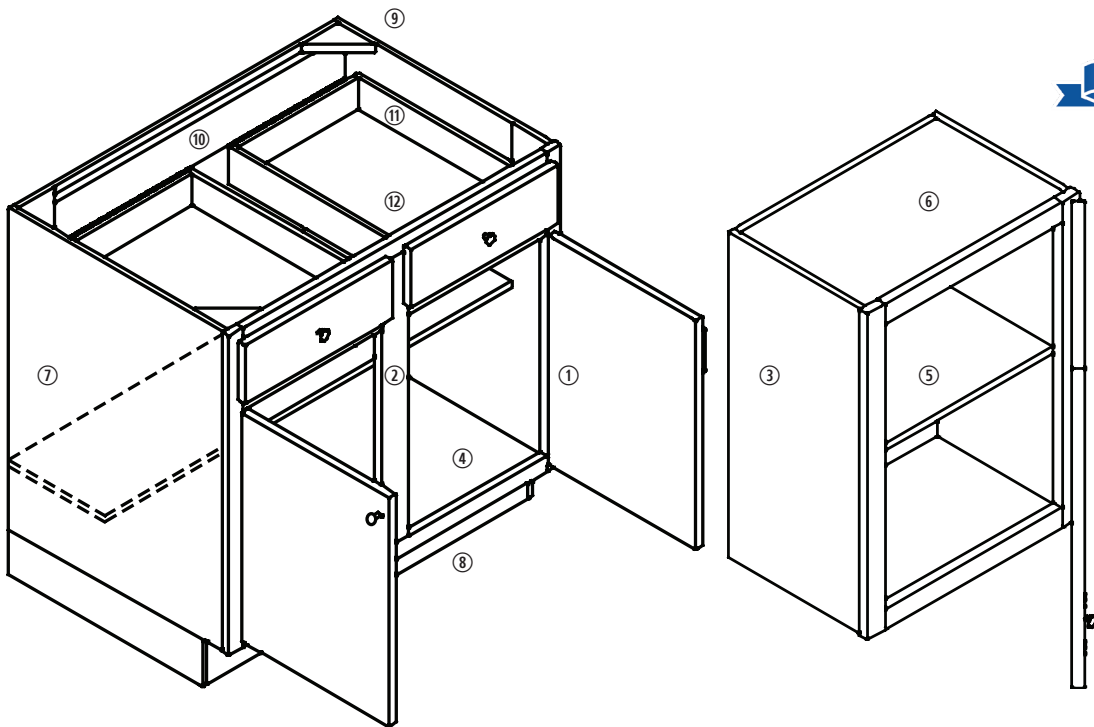




REPUBLIC  
ELITE

# FRAMED SEVERE USE CABINETS

## Plywood Construction






- ① Hinges – 1/2" overlay 180 degree wrap
- ② Face Frame – 3/4" hardwood
- ③ End Panels – 5/8" nominal plywood
- ④ Base Bottoms – 5/8" nominal plywood
- ⑤ Shelves – Fixed 5/8" nominal plywood, edge banded 1 side
- ⑥ Wall Tops/Bottoms – 5/8" nominal plywood
- ⑦ Backs - 5/8" nominal plywood
- ⑧ Toe Kick Supports – 1/2" marine grade plywood (inset)
- ⑨ Corner Blocks – Triangular nylon
- ⑩ Drawer Guides – Undermount; dual steel rails; 90 lb. rated
- ⑪ Drawer Box – 15mm plywood dovetail
- ⑫ Drawer Bottom – 1/4" exterior grade plywood

Note: Variation in color and grain may differ from actual product.

15167 Business Ave  
Addison, TX 75001  
(972) 606-9667 office  
(972) 735-0934 fax  
info@republicelite.com

REPUBLICELITE.COM

-  /republicelitemultifamilyinteriors
-  /company/republicelite
-  /republicelitemf





REPUBLIC  
ELITE

# FRAMED SEVERE USE CABINETS

## Door Style

## Finish Selections



Bark



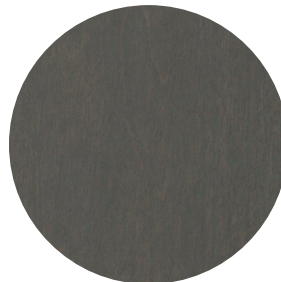
Café



Castlerock



Cognac



Heritage Grey



Pecan

### BRANSON

¾" Exterior Grade Plywood


Standard overlay slab door with back bevel edge profile. Slab drawer front with matching back bevel edge profile.


*Heritage Grey shown*


Note: Variation in color and grain may differ from actual product.

15167 Business Ave  
Addison, TX 75001  
(972) 606-9667 office  
(972) 735-0934 fax  
info@republicelite.com

REPUBLICELITE.COM

 /republicitemultifamilyinteriors

 /company/republicelite

 /republicitemf

