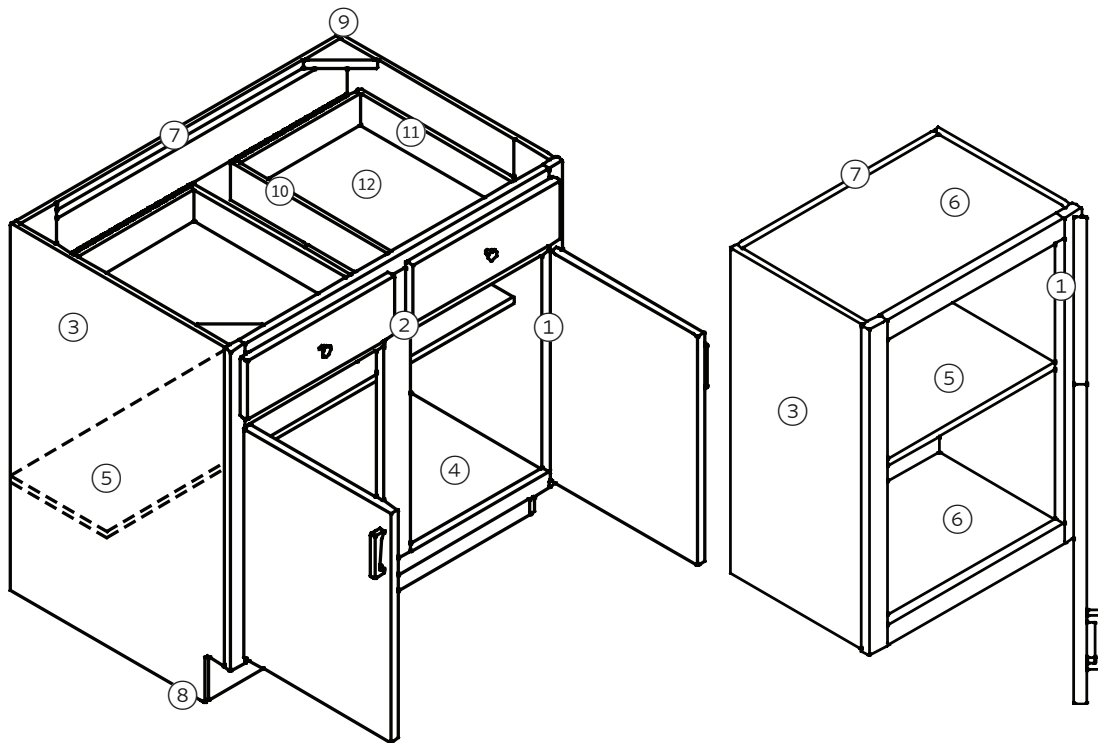




REPUBLIC
ELITE

FRAMED CABINETS WITH MELAMINE DOORS

Standard Construction



- ① Hinges – 1/2" overlay concealed
- ② Face Frame – 3/4" hardwood
- ③ End Panels – 1/2" particleboard
- ④ Base Bottoms – 1/2" particleboard
- ⑤ Shelves – 5/8" pbd, base & wall adj.
- ⑥ Wall Tops/Bottoms – 1/2" particleboard
- ⑦ Backs – 1/8" hardboard
- ⑧ Toe Kick Supports – 1/2" particleboard (inset)
- ⑨ Corner Blocks – Triangular nylon
- ⑩ Drawer Guides – Epoxy, 75 lb. capacity
- ⑪ Drawer Box – 1/2" particleboard
- ⑫ Drawer Bottom – 1/8" hardboard

Note: Variation in color and grain may differ from actual product.



KITCHEN CABINET
MANUFACTURERS ASSOCIATION

15167 Business Ave
Addison, TX 75001
(972) 606-9667 office
(972) 735-0934 fax
info@republicelite.com

REPUBLICELITE.COM

[f](#) /republicitemultifamilyinteriors

[in](#) /company/republicelite

[e](#) /republicitemf

Melamine Doors on Framed Cabinet Selections

Door Style



Aspen

Slab 2 sided melamine 5/8" particleboard core door with PVC edge banded outside square edge. Slab drawer front has matching outside edge.

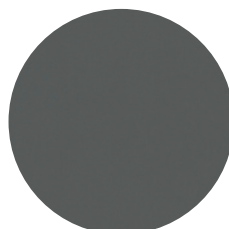
Door Color



Cocoa



Peppercorn

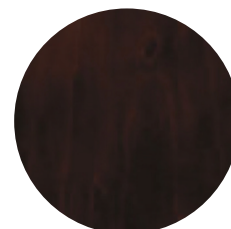


Tin Roof



Snowdrift

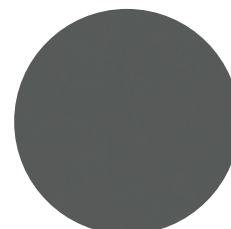
Cabinet Finish



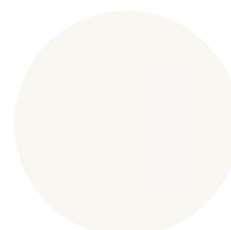
Café Stain



Castlerock Stain



Tin Roof Paint



White Paint


Note: Variation in color and grain may differ from actual product.





KITCHEN CABINET
MANUFACTURERS ASSOCIATION

15167 Business Ave
Addison, TX 75001
(972) 606-9667 office
(972) 735-0934 fax
info@republicelite.com

REPUBLICELITE.COM

 /republicelitemultifamilyinteriors

 /company/republicelite

 /republicelitemf